

# Welcome



### About Kingsland Bay State Park

Kingsland Bay State Park sits on the picturesque shores of Lake Champlain and is a favorite spot for events and weddings, due to the stunning backdrop. The park offers a variety of activities including swimming, boating and walking. Facilities include an historic banquet hall perfect for large groups, an 18th century stone house with wrap-around porch and a rustic theatre building.

Much of the 264-acre state park on the shores of Lake Champlain is a designated State Natural Area.

The historic Hawley House, circa 1790, was built with stones from the ruins of Fort Ticonderoga. The house is listed on the National Register of Historic Places. The house served as an inn for travelers; ferry service once ran from Kingsland Bay across the lake to New York. The second floor served as a ballroom for dances and festivities. During the War of 1812, the Hawley House housed the militia. At the turn of the 20th century it became a monastic retreat and the bell tower was added to the structure. From 1924 to 1974, the property served as *L'Ecole Champlain*, an exclusive resort-like girls' summer camp that catered to the wealthy, including a young Jacqueline Bouvier Kennedy Onassis.

Other notable historic buildings include the banquet hall and the theater building which both date from the early 20th century.

### Facilities and Amenities

The beautiful, historic buildings are available to rent for weddings and other group functions. All facilities may be rented for one price Friday - Sunday; this includes day entry fees for all of your guests. Facilities may be rented individually Monday - Thursday.

### Notes

---

---

---

---

---

---

---

---

---

---

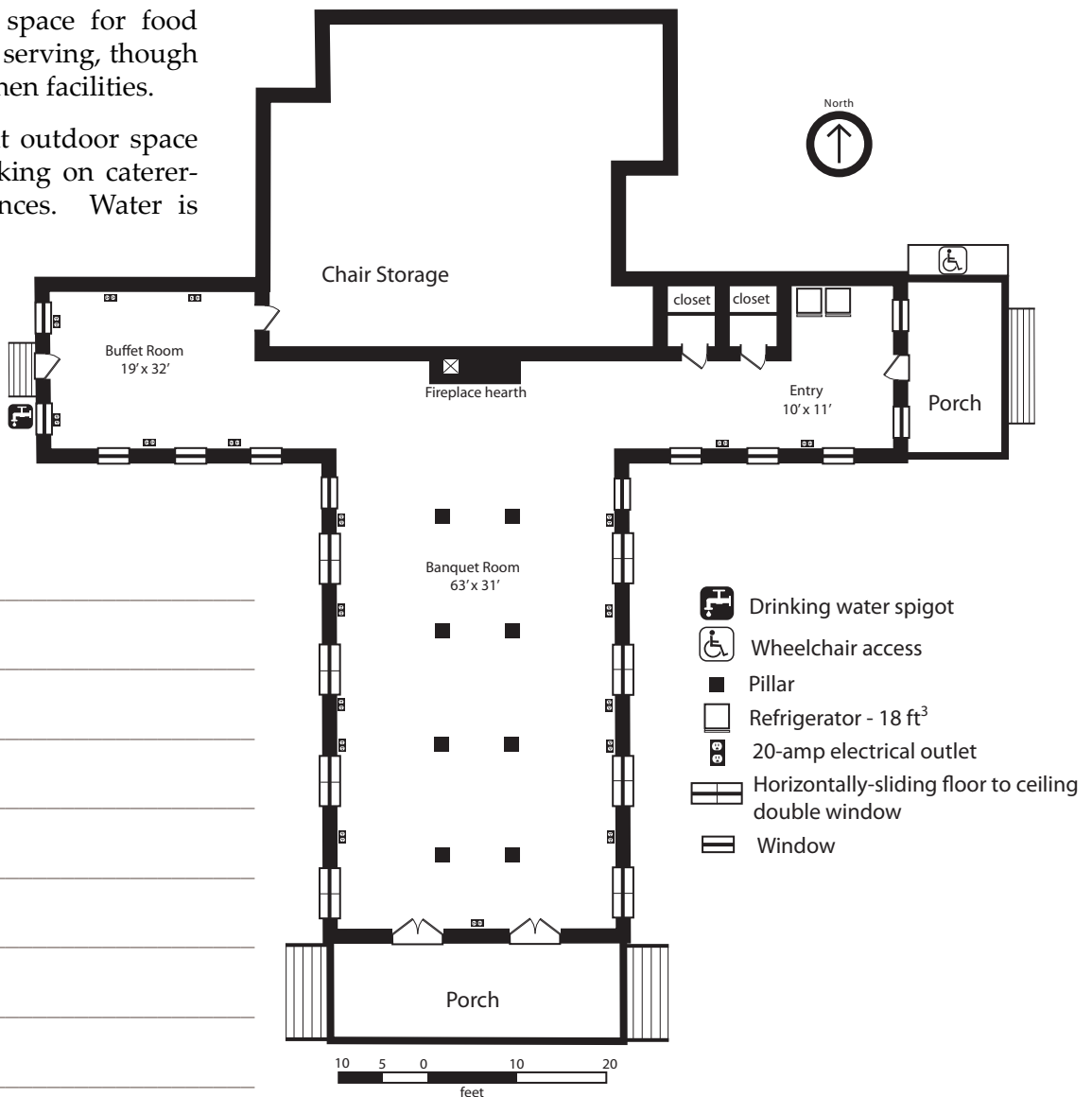
# Banquet Hall



The colonial revival banquet hall boasts a working native-stone fireplace and large porch. It can be configured to seat up to 150 people.

There is inside space for food preparation and serving, though there are no kitchen facilities.

There is adjacent outdoor space for outdoor cooking on caterer-supplied appliances. Water is also available.



## Notes

---



---



---



---



---



---



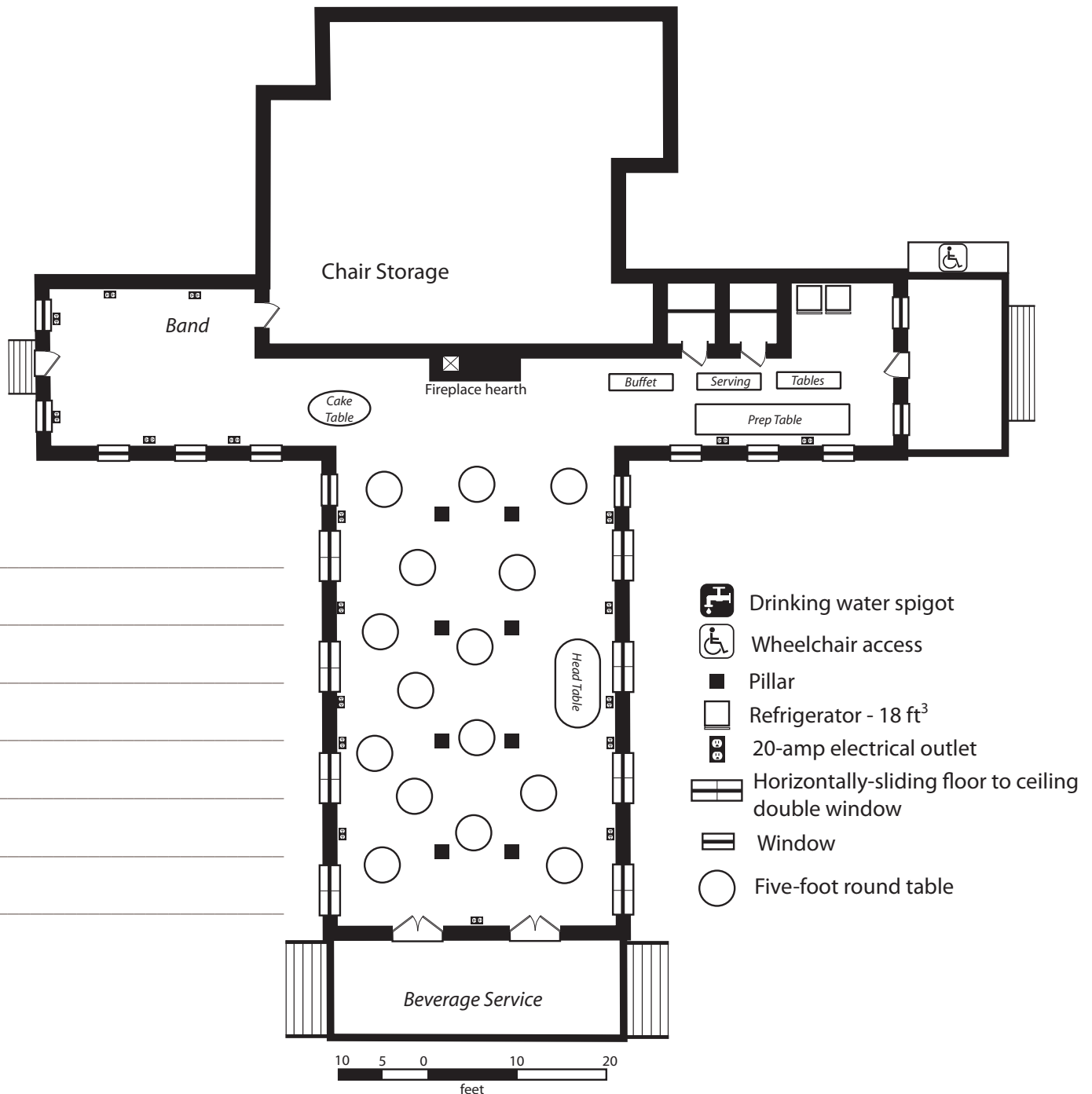
---



---

# Seating Plan

120  
guests



Notes

---



---



---











---



---



---

-  Drinking water spigot
-  Wheelchair access
-  Pillar
-  Refrigerator - 18 ft<sup>3</sup>
-  20-amp electrical outlet
-  Horizontally-sliding floor to ceiling double window
-  Window
-  Five-foot round table



# Hawley House



The Federal vernacular style Hawley House provides intimate space for small groups, meetings and dressing rooms for the wedding party. There is one furnished room with a conference table that seats up to 12 people. The Hawley House is often used as a dressing room for the bride and her attendants. The wrap-around porch is a popular place for photos.

The Hawley House is included with the rental of other buildings Friday - Sunday or may be rented separately from other facilities Monday - Thursday.

Furnishings include a large wooden table with seating for twelve in the meeting room (this space is often used as the gentlemen's dressing area). The bride's dressing room has a full length mirror, several chairs, a dressing table and for hanging the bride's gown and bridesmaids' dresses.

*Notes*

---



---



---



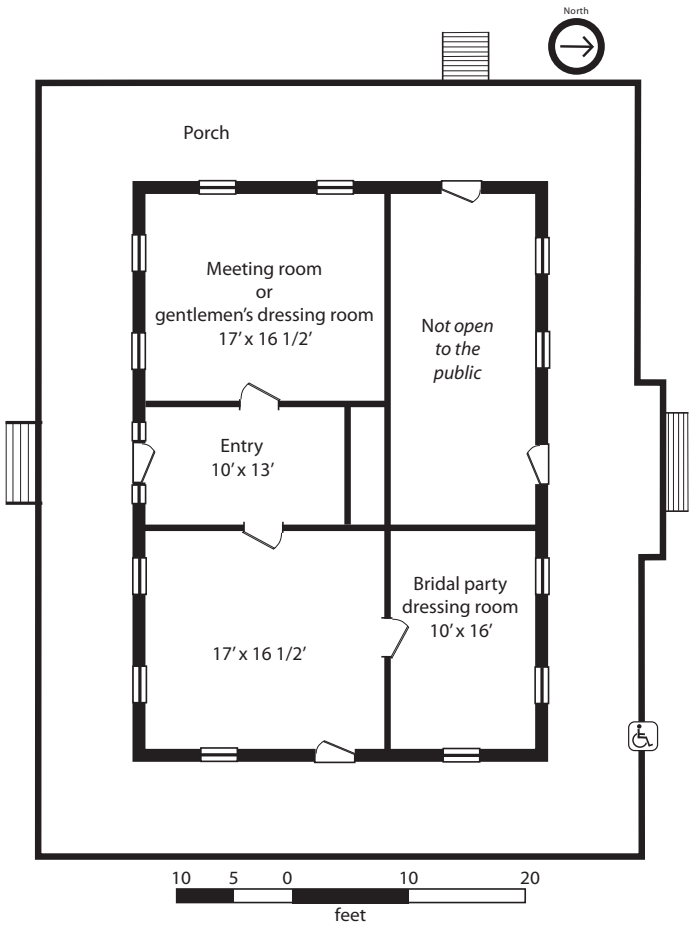
---



---



---



# Theatre



The Theatre is a warm, rustic structure with a stage at the northern end and stone fireplace at the southern end. The exterior is in the Colonial Revival style; the interior is Adirondack-rustic. This building can seat up to 50 people.

The Theatre offers space for cocktail hour, dancing, children's activities or changing space for the bridal party. In case of inclement weather, the Theatre may be decorated and used for exchanging vows.

The Theatre is included with the rental of other buildings Friday - Sunday or may be rented separately from other facilities Monday - Thursday.

## Notes

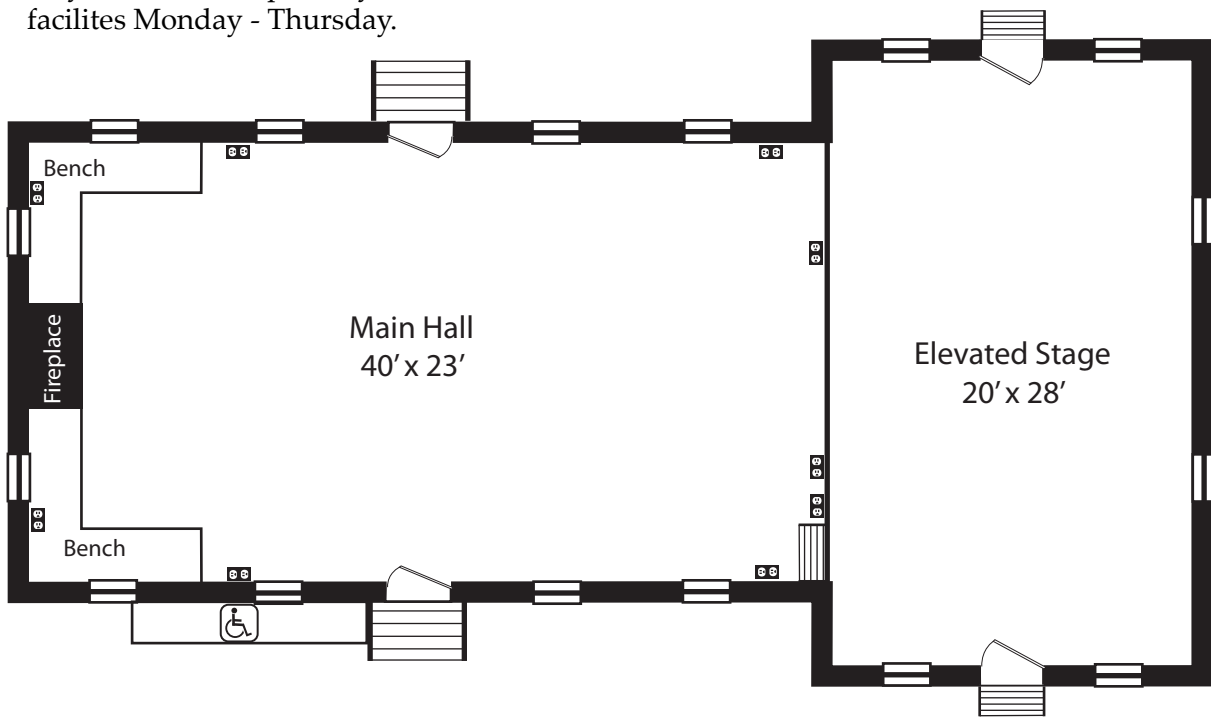
---

---

---

---

---



- 20-amp electrical outlet
- Wheelchair access
- Window

# Pricing



## Friday - Sunday

### All facilities

Day entry fees for guests and trash/recycling disposal included

\$2,500 per day

## Monday - Thursday

Buildings may be rented individually mid-week; prices include day entry fees and trash/recycling disposal

### Banquet Hall (seats up to 150)

\$900 per day

### Theatre Building (Seats up to 50)

\$150 per day

### Hawley House (Seats up to 12)

\$150 per day

## Items included in facility rental

- Use of lawn for ceremony
- Use of grounds and restrooms\*
- Use of 150 garden chairs
- Use of 19 five-foot round tables (must remain indoors)
- Use of 5 rectangular tables 8' x 3'
- Use of 5 rectangular tables 8' x 2'1/2"

\* Grounds and restrooms remain open to the public.

## Facility deposit

A \$500 cleaning, damage and compliance deposit is due to the park by May 15, payable by check or credit card. The deposit is refundable upon satisfactory inspection of the facilities by the Park Ranger at the close of your event. In order to receive your full deposit back, we ask that:

- all buildings, furnishings and park property be left in pre-rental condition with no visible damages
- all trash and recycling is picked up, sorted, bagged and left in the receptacles provided
- all decorations are removed
- you complete clean-up and vacate facilities by sunset.

## Notes

---

---

---

---

# General Information



**Park season:** Kingsland Bay State Park is open Memorial Day weekend through Columbus Day weekend.

**Outdoor vows:** An outdoor wedding at Kingsland Bay provides a beautiful, natural setting. Outdoor ceremonies are often set up on the lawn near the water overlooking Kingsland Bay. Please remember that the park remains open to the public. The Theater makes an excellent inclement-weather alternative.

**Chairs:** 150 "garden style" chairs are included with the Banquet Hall rental.

**Caterers:** If you are looking for a caterer, we suggest the web site [vermontweddings.com](http://vermontweddings.com). Many local caterers have hosted events at the park. Please give your caterer the information sheet included in this packet. Your caterer will need to meet or speak with the Park Ranger 8 weeks in advance of the event.

**Alcohol:** Guests may provide their own alcoholic beverages for personal consumption in containers 1 gallon or smaller. A liquor-licensed caterer is necessary to serve alcohol to guests. No glass containers are allowed near the swimming area.

**Music:** Check [vermontweddings.com](http://vermontweddings.com) for a list of music providers. Please give your music providers the information sheet included in this packet. Musicians or DJs must speak to the Park Ranger at least 8 weeks in advance of the event.

All amplified music must be inside and must cease 1 hour before sunset. This is to ensure all visitors enjoy the park and to maintain the serenity of our surrounding community. The level of tolerable noise is at the discretion of the park staff. You may have a microphone set up for your outdoor wedding vows.

**Rubbish:** All trash must be picked up and properly sorted. You may leave sorted trash and recycling at the park recycling center. Please separate glass, aluminum, plastic, paper and cardboard into separate bags and place them adjacent to the trash container.

**Electrical supply:** There are 120-volt outlets on 20-amp circuits spaced every 5 to 8 feet in the banquet hall.

**Water supply:** There are two convenient water spigots close to the banquet hall. One is located between the theatre building and banquet hall and the second is located behind the bath house. Local caterers are familiar with park facilities.

**Tent rental:** Tents of all sizes can be accommodated. They must be set up and taken down on the day of the event. Tents may not block access to the beach and day use area. The Park Ranger must pre-approve all tent locations to ensure that underground utility systems are protected. Very large tents (over 1,000 s.f.) require a permit from the Vermont Fire Safety Division. See <http://www.dps.state.vt.us/fire/> for more information.

# General Information



**Park hours:** The park closes at sunset; go to [www.almanac.com/sun](http://www.almanac.com/sun) to check the sunset time on the day of your event. This information is beneficial to your caterer, tent provider and music provider. If your wedding includes a meal, you will want to allow enough time to prepare, serve, dine and clean up before the park closes at sunset.

**Map and Directions for Invitations:** A map and guide of Kingsland Bay State Park is included which displays the layout of grounds and facilities. The map and guide is also available for download from our website. Detailed driving directions are included in this packet.

**Pets:** Pets are prohibited at Kingsland Bay State Park. Visitors arriving with a pet will not be permitted to enter the park. Please be certain all group members know this in advance. We have included this information on the enclosed map.

**Signs:** You may post a directional sign on Route 7 and Little Chicago Road for your guests.

**Payment and reservation:** The date of your event will be reserved for you when you first contact us. You will have two weeks from that date to complete a *Group Use Agreement* form and submit your payment to the Reservations Center office. If payment and paperwork are not received within 14 days of making your reservation, the reservation will be canceled.

**Meeting with park staff:** Park staff is available to meet with you and answer questions from early May through Columbus Day. As a courtesy, staff will contact you in early May. Please inquire at the Reservations Center for information or to arrange an off-season tour (pending staff availability and weather).

## Notes

---

---

---

---

---

---

---

---

---

---

*For  
your  
caterer*



*Please share this information with your caterer.*

**Here are some important points about working on an event at Kingsland Bay State Park.**

#### **Kingsland Bay State Park**

787 Kingsland Bay State Park Road  
Ferrisburgh, Vermont 05456  
Park Phone: 802-877-3445

#### **Equipment available for use**

There are two standard sized refrigerators available for your use. There are no cooking or food preparation facilities.

#### **Electric supply**

The Banquet Hall has 120-volt outlets on 20-amp circuits spaced every five to eight feet.

#### **Water supply**

There is a water spigot for catering purposes near the northwest entrance of the Banquet Hall and another behind the restroom.

#### **Alcohol**

Guests may provide their own alcoholic beverages for personal consumption in containers 1 gallon or smaller. A liquor-licensed caterer is necessary to serve alcohol to guests. No glass containers are allowed near the swimming area.

#### **Trash and recycling**

All trash must be picked up and properly sorted. You may leave sorted trash and recycling at the park recycling center. Please separate glass, aluminum, plastic, paper and cardboard into separate bags and place them adjacent to the trash container.

#### **Park hours**

Park is open 10:00 am to sunset. Plan sufficient time for set-up prior to the event and take-down of equipment before the park closes at sunset.

#### **Working with park staff**

The caterer must meet or speak with the Park Ranger at least 8 weeks prior to the event.

Plan to discuss:

- Equipment unloading logistics
- Setup and take-down
- Timing of rental item drop off and pick up (flatware, table cloths, etc.).

# For your music provider



*Please share this information with your music provider.*

Here are some important points about working on an event at Kingsland Bay State Park.

### **Kingsland Bay State Park**

787 Kingsland Bay State Park Road  
Ferrisburgh, Vermont 05456  
Park phone: 802-877-3445

### **Noise level**

**All amplified music must be inside and must cease 1 hour before sunset.** This is to ensure all visitors enjoy their visit in the state park and to maintain the serenity of our surrounding community. The level of tolerable noise is at the discretion of the park staff. You may have a microphone set up for your outdoor wedding vows.

### **Electric supply**

The Banquet Hall has 120-volt outlets on 20-amp circuits spaced every five to eight feet.

### **Park hours**

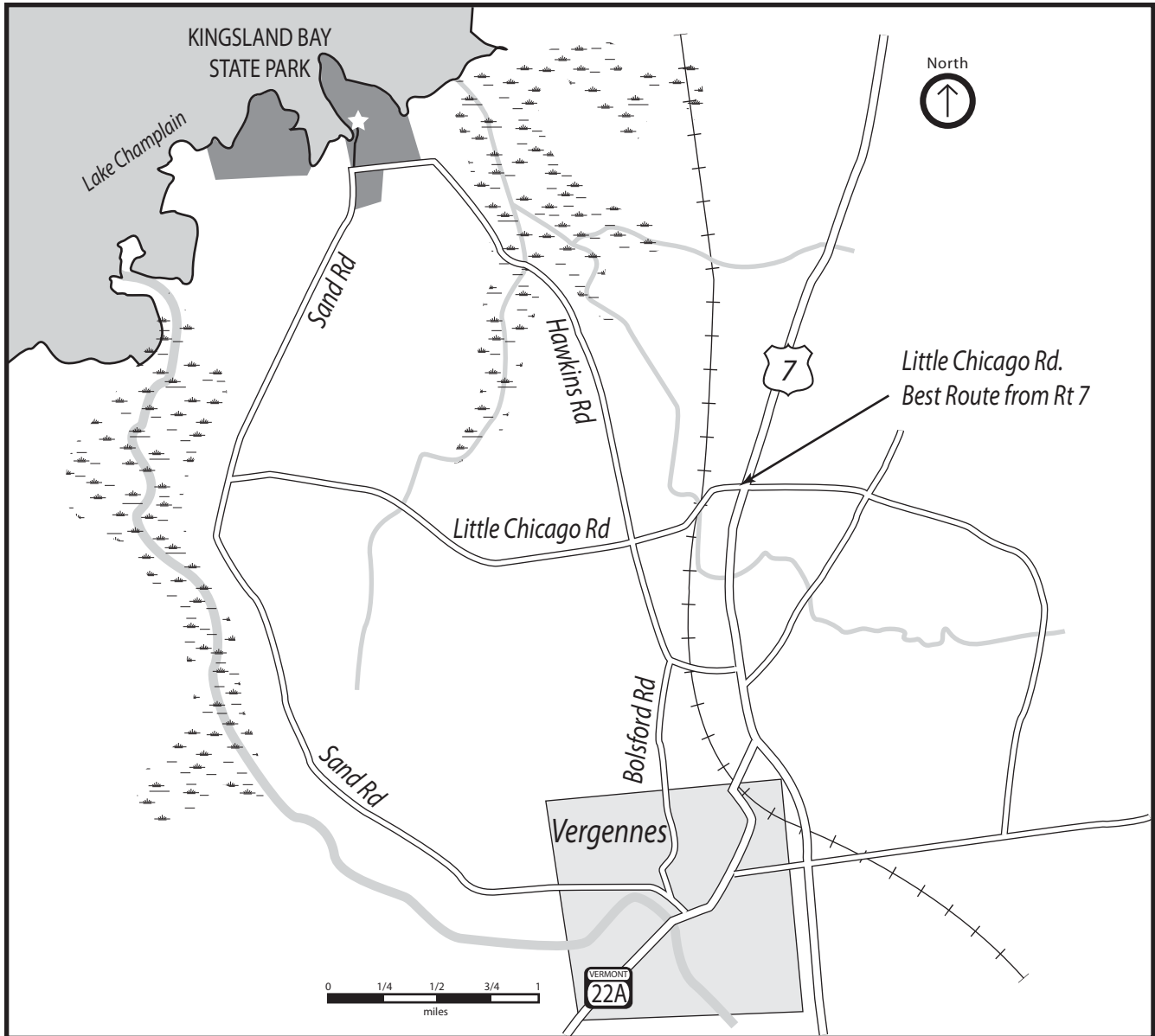
Kingsland Bay State Park is open 10:00 am to sunset. Music shall end one hour before the park closes. Plan sufficient time for set-up prior to the event and take-down of equipment before the park closes at sunset.

### **Working with park staff**

The music provider must meet or speak with the Park Ranger at least 8 weeks prior to the event. Plan to discuss:

- Equipment unloading logistics
- Setup and take-down
- Timing and volume of music.

# Getting to Kingsland Bay State Park



Kingsland Bay State Park  
787 Kingsland Bay State Park Rd  
Ferrisburgh, VT 05456  
(802) 877-3445

N 44° 14.412' W 73° 17.736'

## Best Route

From U.S. Route 7, travel west on Little Chicago Rd, turning right onto Hawkins Road. Park entrance is about 4.7 miles from U.S. 7 on the right.

## Distance to Kingsland Bay State Park From:

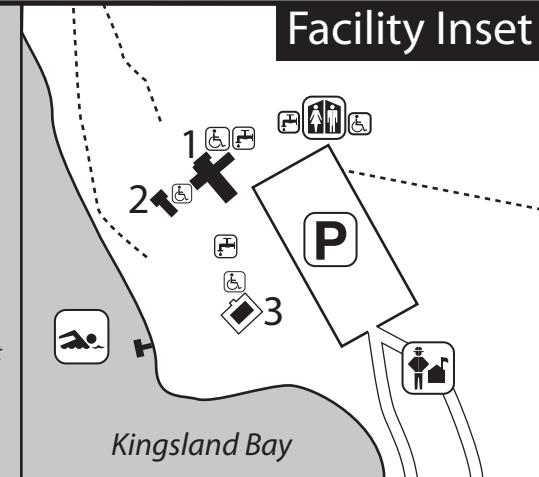
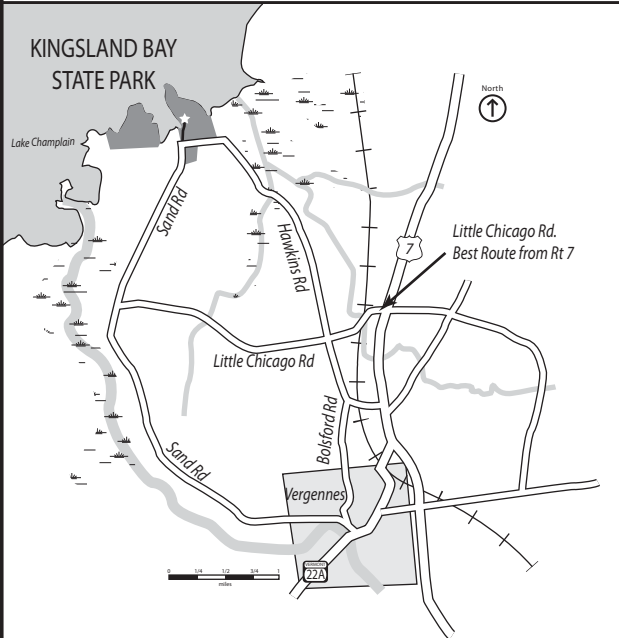
Burlington:	24 miles
Vergennes:	6 miles
Fair Haven:	48 miles
Rutland:	50 miles

# Kingsland Bay State Park

Ferrisburgh, Vermont



## Facility Inset



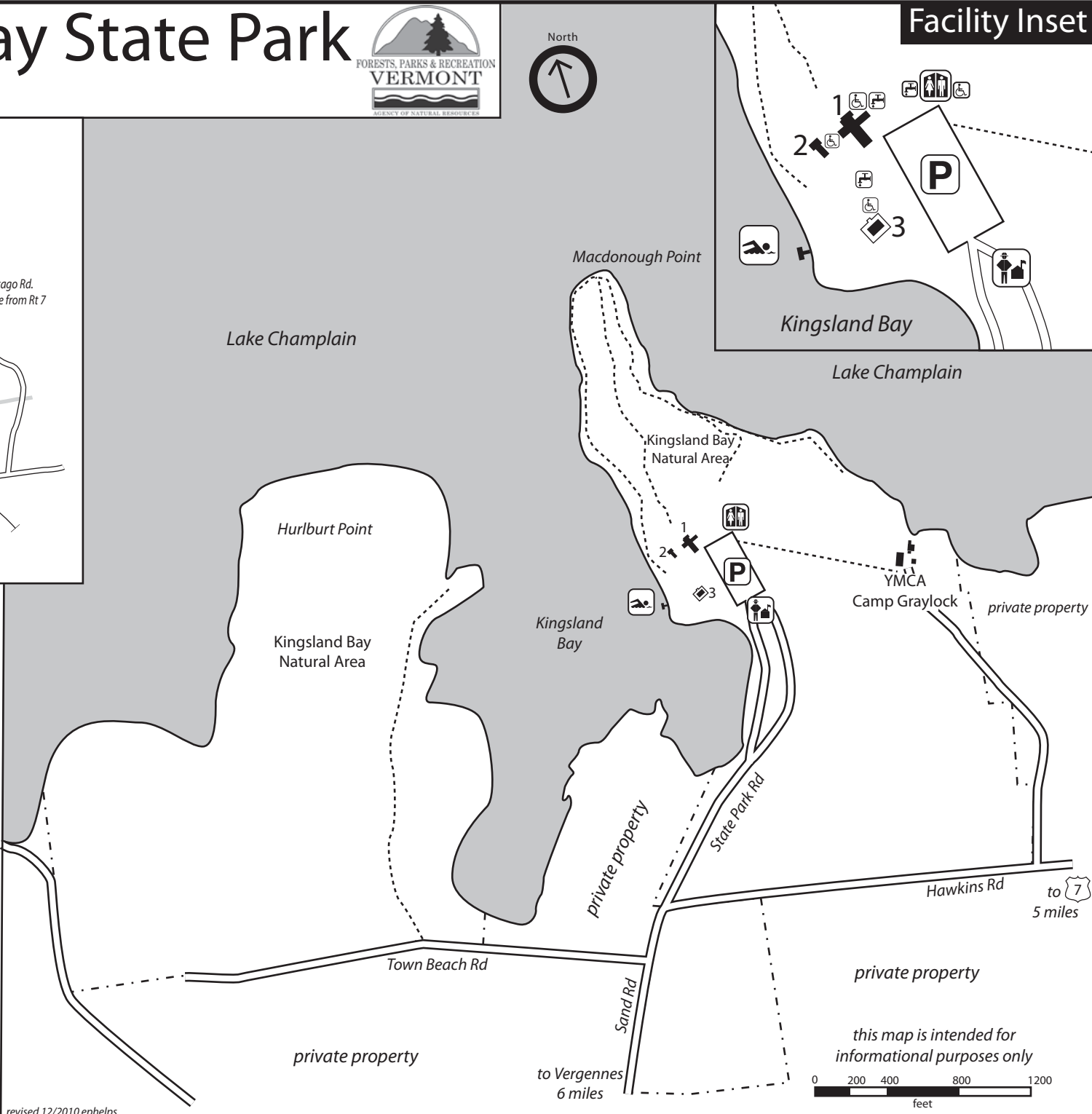
**Legend**

- Park office
- Parking
- Restrooms
- Wheelchair accessible facility
- Drinking water
- Swimming area

**Facilities**

- 1 Banquet Hall
- 2 Theater Building
- 3 Hawley House

- - - - Foot trail
- · - · - Park boundary



revised 12/2010 ephelps

this map is intended for informational purposes only