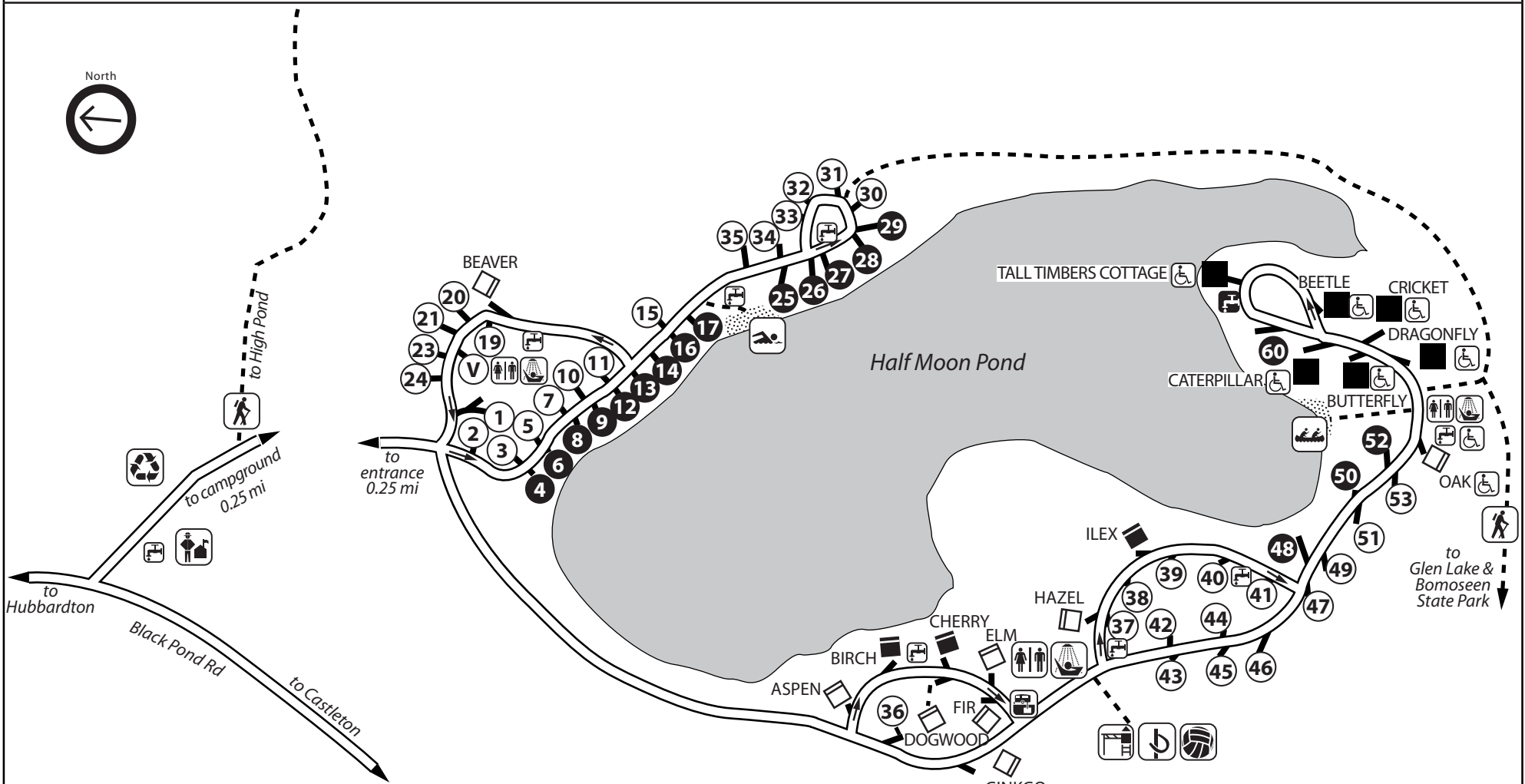


# Half Moon Pond State Park

Hubbardton, Vermont



- |                        |                |                                |                    |
|------------------------|----------------|--------------------------------|--------------------|
| Park office            | Prime campsite | Restrooms                      | Trailhead          |
| Drinking water         | Campsite       | Showers (\$)                   | Swimming area      |
| Trash/Recycling center | Lean-to        | Wheelchair accessible facility | Cartop Boat Launch |
| RV Sanitary Station    | Cabin/cottage  | Volunteer Site                 | Playground         |
|                        |                | Road traffic direction         | Horseshoe pit      |
|                        |                |                                | Volleyball         |



this map is intended for informational purposes only



## Half Moon Pond State Park

Nestled away in the forests of 3,500-acre Bomoseen State Park sits the quiet camping area comprising Half Moon Pond State Park. Set in the dense woods of a small, sheltered basin, the park surrounds Half Moon Pond. The campground offers camping for all tastes with its waterfront campsites and lean-tos and five furnished cabins. For those seeking more creature comforts, Tall Timbers Cottage, with its waterfront location and private boat dock, offers all the amenities of home.

A perfect place for campers seeking a respite from the hustle and bustle of daily life, the park offers a vast trail system including a short walk or, for the more ambitious, a full-day's hike. Hikers are likely to see a variety of wildlife including white-tailed deer or an occasional moose.

Rowboats, kayaks, canoes and pedal boats are available for rent from the park office, and a small, sandy beach provides for sunbathing and swimming. The pond also has excellent fishing, where anglers can catch panfish, yellow perch, largemouth bass and rainbow trout. Other exceptional fishing opportunities can be found at nearby Glen Lake and Lake Bomoseen.

### Half Moon Pond State Park Amenities:

- 52 tent/trailer sites
- 11 lean-to sites
- 5 cabins
- 1 rental cottage
- Restrooms with hot showers (\$)
- Firewood and ice for sale
- Boat rentals

### Recreating in Half Moon Pond State Park:

- Hiking trails
- Interpretive Programs
- Swimming
- Fishing
- Boat rentals

### Recreating and sightseeing in the area:

- Hiking at Bomoseen State Park
- Swimming, fishing and boating on Lake Bomoseen, Glen Lake and other nearby ponds
- Mount Independence State Historic Site
- Hubbardton Battlefield State Historic Site
- Delaware & Hudson multi-use Rail Trail

For more information, contact:

**Half Moon Pond State Park**  
**1621 Black Pond Road**  
**Hubbardton, VT 05743**  
**(802) 273-2848 (during operating season)**

OR

**Vt State Parks Reservation Center**  
**(888) 409-7579**  
**Monday - Friday 9 a.m.-4 p.m.**  
**[www.vtstateparks.com](http://www.vtstateparks.com)**



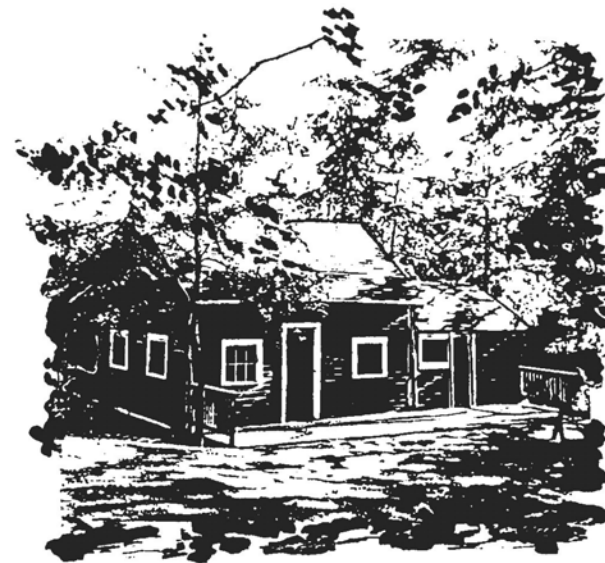
**AGENCY OF NATURAL RESOURCES**  
**Department of Forests, Parks and Recreation**

To request this publication in Braille or alternate visual format, please contact  
[parks@vermont.gov](mailto:parks@vermont.gov)  
VT TDD Relay Dial 7-1-1  
Printed on recycled paper  
12/07-RRA

---

---

# Half Moon Pond State Park Map & Guide



### *Memorial Day Weekend- Columbus Day*

Camping  
Fishing  
Hiking  
Boat Rentals  
Cabin & Cottage Rentals

---

---